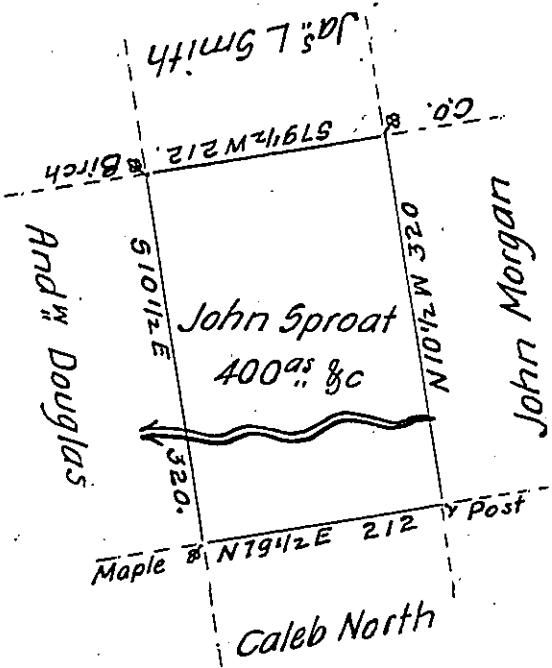


Hazle
Luzerne



A Draft of a tract of land Called _____ Situate on the Waters of Catawissey
 Creek in the County of Northum^d or Northamp[?] Containing four Hundred acres
 & allow^e Surveyed for John Sproat the 19th day of October 1793 by Virtue of
 a Warrant dated the 10th day of July 1793.

To

by W^m Gray D.S.

Daniel Brodhead Esq. }

Surv^r Genl. }

IN TESTIMONY that the above is a copy of the original remaining on file in
 the Department of Internal Affairs of Pennsylvania, made
 conformably to an Act of Assembly approved the 16th day of
 February, 1833, I have hereunto set my Hand and caused
 the Seal of said Department to be affixed at Harrisburg,
 this fourth..... day of December..... 1906

Isaac D. Brown
 Secretary of Internal Affairs.